



# Bevan GROUP

## Products & Services Handbook

# Contents

> Bevan21	04
> Box Bodies	06
> Curtainside Bodies	08
> Dropside Bodies	10
> Luton	12
> Glass Carriers	14
> Icon	16
> Low Loaders	18
> Construction: Traffic Management Vehicles	20
> Construction: Dropside Tipper	22
> Construction: Beaver-Tail Trucks	24
> Construction: Dropside Tipper Grab	26
> Services	28

# Integer posuere erat a ante venenatis Products & Services of Bevan Group.

Cras justo odio, dapibus ac facilisis in, egestas eget quam. Sed posuere consectetur est at lobortis. Cras mattis consectetur purus sit amet fermentum. Cum sociis natoque penatibus et magnis dis parturient montes, nascetur ridiculus mus.

Vestibulum id ligula porta felis euismod semper. Aenean eu leo quam. Pellentesque ornare sem lacinia quam venenatis vestibulum. Vestibulum id ligula porta felis euismod semper. Etiam porta sem malesuada magna mollis euismod.

## > Products & Services

# Bevan21

The Bevan21 is one of our streamlined aerodynamic truck bodies. It is able to reduce fuel bills by up to 15% (independent test carried out by Commercial Motor and boosts mpg performance on multi-drop runs.

### > 01.

#### Tail Lift & Rear Closure

Tail lift and rear closure options designed to meet your operational requirements

### > 02.

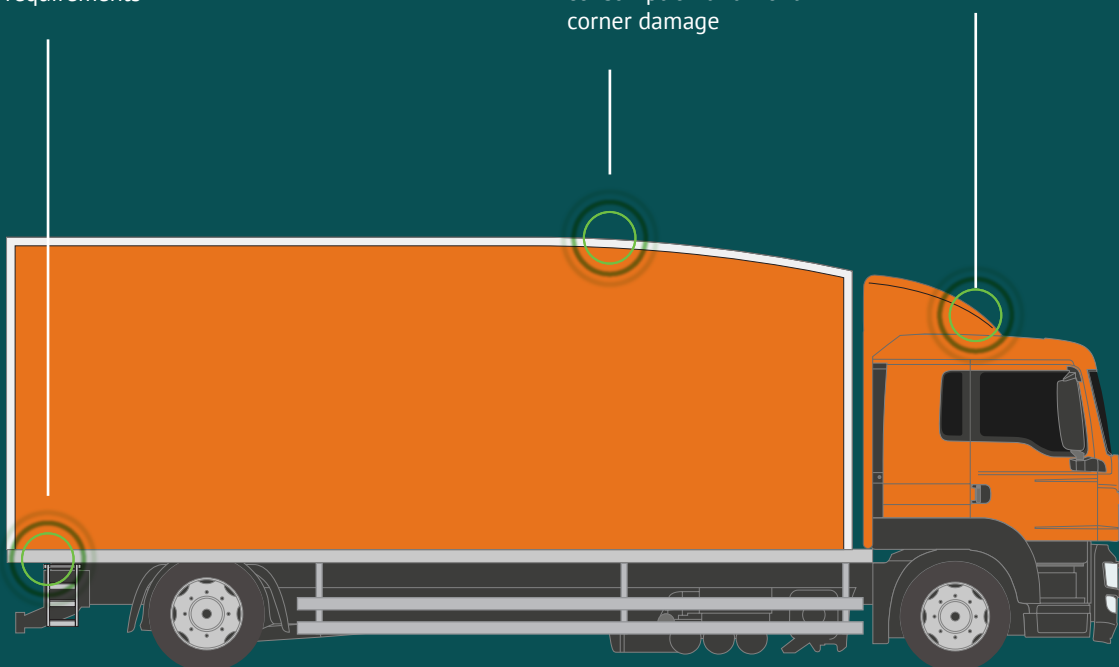
#### Curved Design

Curved roof to reduce fuel consumption and front corner damage

### > 03.

#### Reduced Wind Resistance

Aerodynamic deflector and collar kit to reduce wind resistance.



## Introduction

---

In a nutshell, our streamlined vehicles minimise turbulence, reduce wind drag and lower fuel consumption. This, combined with weight saving measures, benefits and aids fuel economy. The Bevan21's innovative and aerodynamic shape is durable whilst it generates significant fuel savings, the vehicle doesn't lose any practical space.

## Information

---

Available from 3.5 to 32 tonnes, our Bevan21 aerodynamic truck bodies can be specified as a GRP box or curtainsider. Our standard box bodies are now built using captive extrusions and have no external fixings, improving the aesthetics of the build and reducing wind drag and fuel consumption. Curtainsiders can be specified as buckleless or having hidden buckles, these again reduce the drag and improve the vehicle's overall image and quality.

The Bevan21 reduces wind resistance while maintaining cubic load volumes, with features including a curved roof and a specially moulded air deflector and cab collar. The combination of the curved roof, collars, spoilers and side skirts help reduce diesel usage and aid fuel economy. Dependant on the customer's needs, the curved roof can be tailored to a particular design or overall vehicle height. We also ensure that our cab tops are fitted to the correct height in relation to the body, further reducing wind drag.

By offering ultra lightweight panels and extrusions with no external fixings, our proactive sales and design team can help to further reduce your carbon footprint and fuel consumption. Our aerodynamic truck bodies have helped many commercial vehicle operators to achieve their carbon reduction targets.

*"We decided to purchase the Bevan21 for the trunking role because it met all of our operational and environmental criteria."*

**Graeme Kay**  
Head of Logistics, AG Barr

> **Products & Services**

# Box Bodies

Bevan Group offers the ultimate in the construction of box bodies, with captive extrusions to minimise wind resistance and give a cleaner and aesthetically pleasing design.

> 01.

**Resistant Design**

Impact-resistant rear frames with rear closure options

> 02.

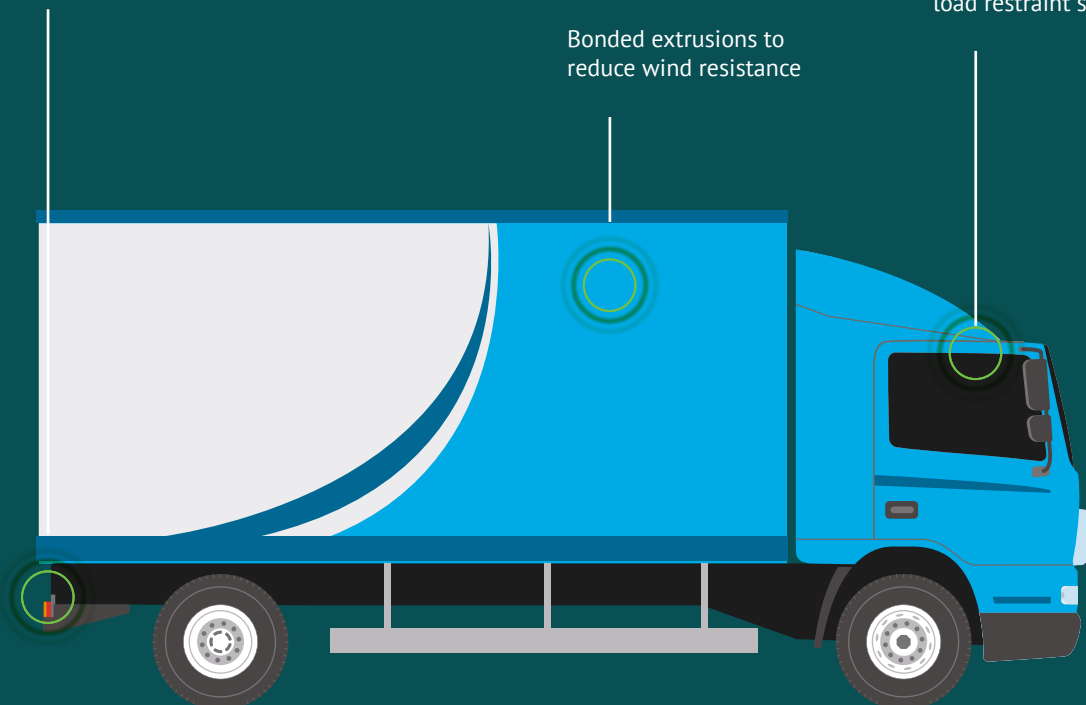
**Reduced Wind Resistance**

Bonded extrusions to reduce wind resistance

> 03.

**Heavy Duty Construction**

Heavy duty GRP construction with internal load restraint systems



## Introduction

The design incorporates the latest technology in bonding and dramatically reduced the number of external fixings required. This gives cleaner lines and ensures any livery fitted gives the best possible impact to the public.

## Information

We tailor make each vehicle to suit your individual requirements, with our highly experienced technical engineers exploring every option to ensure your box bodies are built for maximum efficiency in operation. We are market leaders in innovation and use the latest, high quality materials to offer an intelligent vehicle design that has longevity and is easy to operate.

With lengths ranging from 3m to 10m, our GRP box bodies are designed for vehicles from 3.5 to 32 tonnes gvw, and are suitable for any axle configuration.

While GRP is used in the main for its robustness and longevity, ultra lightweight panels or aluminium construction can also be offered where payloads are critical. Foam core lightweight panels offer considerable payload benefits with little additional cost, whilst also being robust and easy to repair if necessary.

## Manufacturer Availability

**Our box bodies are available for the following chassis cabs:**

- Citroen
- DAF
- Fiat
- Ford
- Isuzu
- Iveco
- Peugeot
- MAN
- Mercedes
- Mitsubishi
- Nissan
- Renault
- Scania
- Vauxhall
- Volvo
- Volkswagen

*“In terms of build quality Bevan bodies represent a huge step forward for us. They also look fantastic on the road, which is important given our company’s design-led ethos.”*

**Malcolm Mullett**  
Transport & Logistics Manager, Ercol

> **Products & Services**

# Curtainside Bodies

Bevan curtainside bodies are designed using the latest computer aided design (CAD) technology and manufactured to suit our customers' precise requirements.

> 01.

**Front & Rear Tensioners**



> 02.

**Pre-stressed Cantilever**

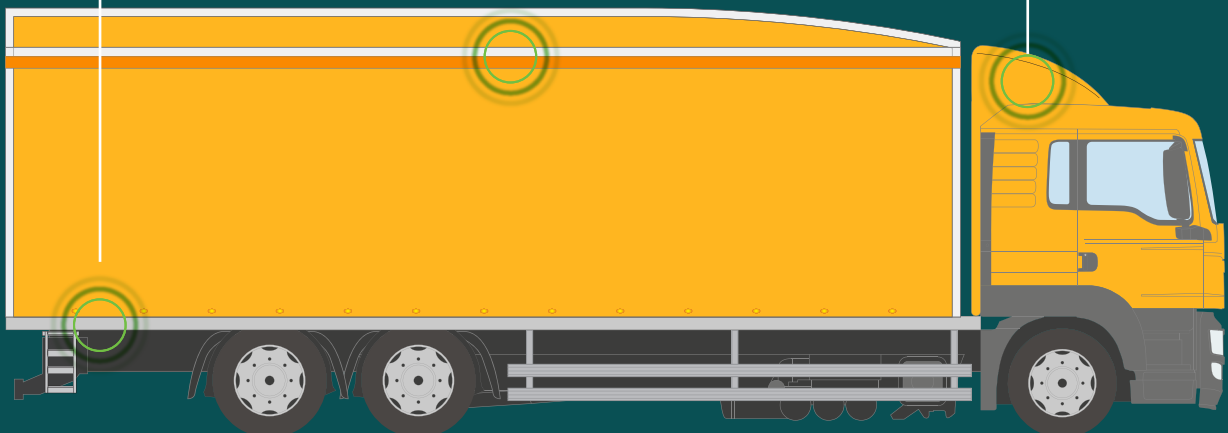
Pre-stressed cantilever rails to give full length loading apertures



> 03.

**Securing Systems**

Internal load securing systems to meet your individual requirements





## Introduction

With options for curtain construction including buckleless systems, anti-slash mesh, wear bands and load restraint systems, as well as additional features such as our pre-stressed self supporting roof, Bevan offers the ultimate in load space versatility and accessibility.

## Information

Our curtainside bodies are custom designed and are available in lengths from 3m to 10m, and for vehicles for 3.5 to 32 tonnes gvw, with any axle configuration. We offer many types of bespoke internal load restraints made specifically for the end users type of operation, from low heavy loads to bulky high loads. Each system is made in conjunction with the customer due to the numerous different challenges that the customers can face when securing their loads safely and easily.

Customers seeking optimum payload capacities can also choose our lightweight aluminium curtainside body. Designed for vehicles up to 10 tonnes, the aluminium option can reduce body weights by up to 500kg.

Safety is paramount when working on a vehicle bed and the Bevan Sky Hook system allows the driver to work safely when loading and unloading the vehicle.

## Manufacturer Availability

**Our curtainside bodies are available for the following chassis cabs:**

- Citroen
- DAF
- Fiat
- Ford
- Isuzu
- Iveco
- Peugeot
- MAN
- Mercedes
- Mitsubishi
- Nissan
- Renault
- Scania
- Vauxhall
- Volvo
- Volkswagen

*“Bevan’s build quality is first class and turnaround times match their quality; we also rely on their aftercare service to maintain not only the bodies but also the tail-lifts. They provide a comprehensive service and are professional and accommodating people to do business with.”*

**Andrew Burnley**  
Group Transport Manager, Brenntag Group

> **Products & Services**

# Dropside Bodies

Bevan offers a range of dropside bodies for the transport sector and builders' merchant industry, from 3.5 to 32 tonnes gw.

> 01.

**Crane Fitting**

Crane fitting carried out by Bevan engineers

> 02.

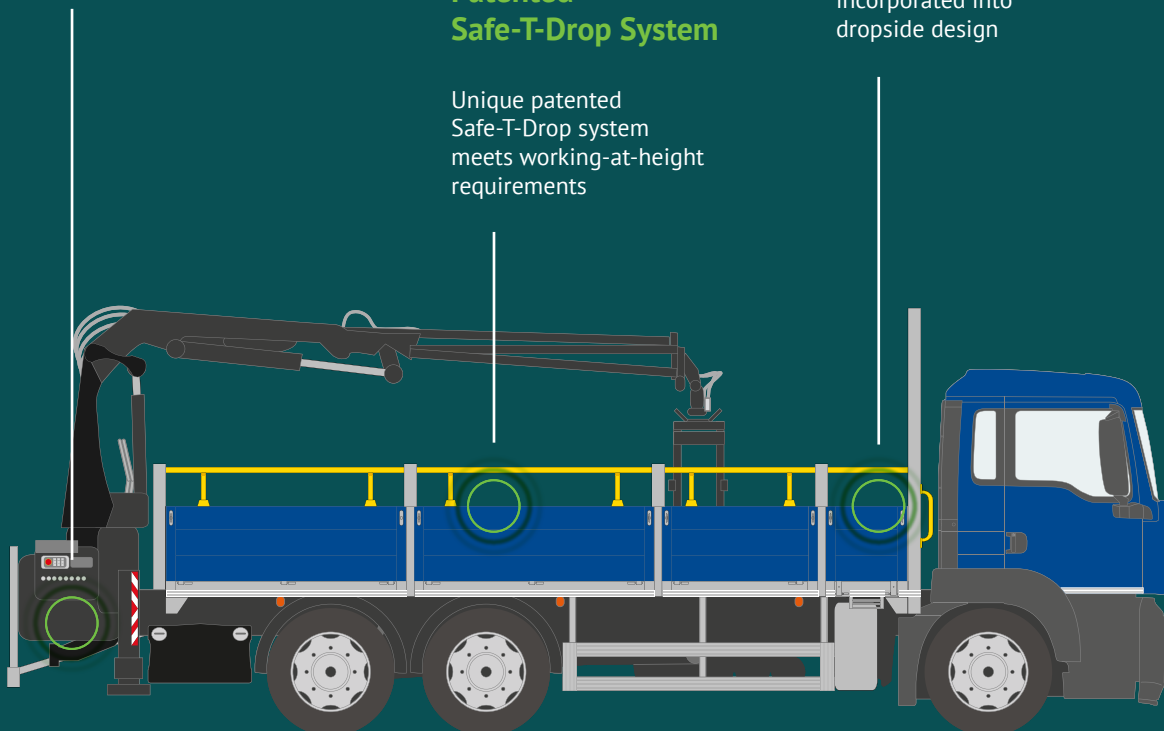
**Patented Safe-T-Drop System**

Unique patented Safe-T-Drop system meets working-at-height requirements

> 03.

**Safety Access Gates**

Safety access gates incorporated into dropside design



## Introduction

Choose from lightweight dropside bodies to maximise payloads through to purpose-build, heavy-duty bodies for vehicles up 32 tonnes gvw.

## Information

We can tailor the design to be as light or robust as possible for certain industry sectors. For example, our specialist exclusive flooring designs maximise grip and weight. Our market leading safety designs ensure that your employees can work at height in a safe environment, whilst still utilising the vehicle to its full extent.

Our patented Safe-T-Drop system can be fitted to all types of dropside bodies and will protect your driver, meeting all health and safety requirements. It can also be retrofitted to your existing fleet. The system is designed so that it has to be used and cannot be removed from the vehicle. It also has to be in place with the sides up, which cannot be raised without the system being engaged. The design is simple, free of moving parts and easy to maintain.

We tailor floor type, dropside configuration, crane specification and mounting position to meet your requirements. We pride ourselves on leading the market in innovation. Features including new floor types such as plastic grip floors for plant hire, punched alloy flooring and impregnated yellow safety boards as standard, all go towards our aim to make the vehicles as easy to use as possible without adding unnecessary cost.

## Manufacturer Availability

**Our dropside bodies are available for the following chassis cabs:**

- Citroen
- DAF
- Fiat
- Ford
- Isuzu
- Iveco
- Peugeot
- MAN
- Mercedes
- Mitsubishi
- Nissan
- Renault
- Scania
- Vauxhall
- Volvo
- Volkswagen

*The Safe-T-Drop system is easy to operate and allows our drivers to access their vehicle beds safely, in line with our strategy of eliminating falls from height. The rails pose no hindrance when loading or unloading, and are strong enough to withstand contact with the fork lift truck.*

**Ian Berrill**

Director of Transport, Saint-Gobain Building Distribution UK and Ireland

> **Products & Services**

# Luton Bodies

Our lightest Luton yet is manufactured from ultra lightweight panels with moulded fibreglass front and captive extrusions which smooth the air flow and minimise wind resistance.

> 01.

**Variety of Closure Option**

Variety of rear closure options including shutters, doors and tail lifts

> 02.

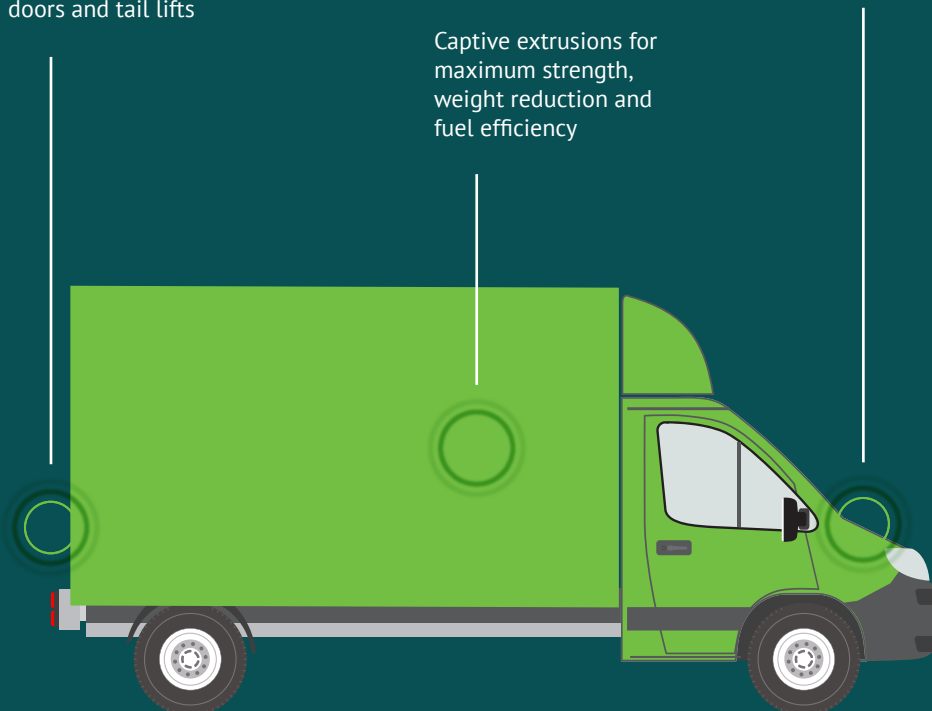
**Captive Extrusions**

Captive extrusions for maximum strength, weight reduction and fuel efficiency

> 03.

**Aerodynamic Front Collar**

Aerodynamic moulded Luton front with collar kit



## Introduction

Efficient production line assembly processes allow Bevan to achieve the most demanding of delivery deadlines.

## Information

Our lightweight Luton range is available for various makes of chassis cab, ranging from 3.0 to 7.0 tonnes gvw.

### Manufacturer Availability – Moulded Luton

Our moulded luton bodies are available for the following chassis cabs:

- Citroen
- Fiat
- Ford
- Peugeot
- Nissan
- Vauxhall
- Volkswagen
- Mercedes - up to five tonnes
- Iveco - up to five tonnes
- Renault - up to five tonnes

### Manufacturer Availability – Raked Luton

Our raked luton bodies are available for the following chassis cabs:

- Citroen
- Fiat
- Ford
- Peugeot
- Isuzu
- Iveco
- Peugeot
- MAN
- Mercedes
- Mitsubishi
- Nissan
- Renault
- Scania
- Vauxhall
- Volvo
- Volkswagen

*“Our latest vehicles were built in good time. The Bevan Luton is a quality product manufactured to withstand daily rental use.”*

**Lee Hudson**  
Director, Eurohire Vehicle Rentals.

> **Products & Services**

# Glass Carriers

We invented the glass-carrying rack and named it the frail.

> **01.**

**Type Approval Systems**

The only glass-carrying systems that meet Type Approval

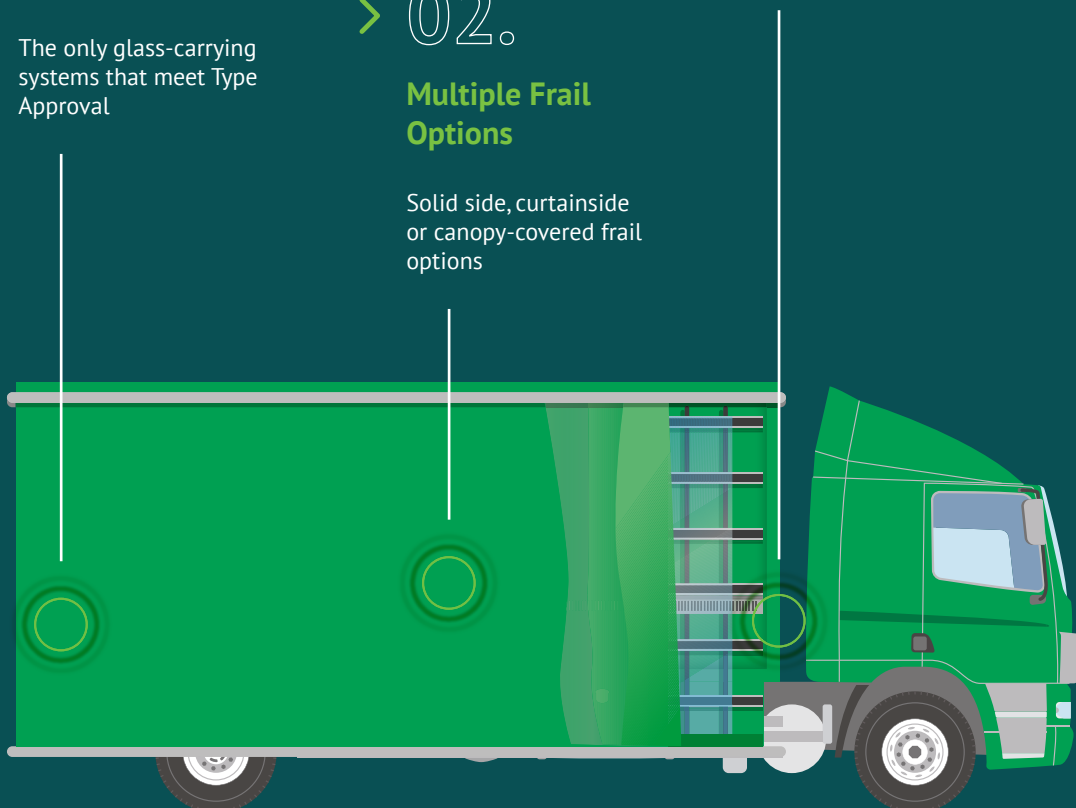
> **03.**

**Patented Load Securing Systems**

> **02.**

**Multiple Frail Options**

Solid side, curtainside or canopy-covered frail options



## Introduction

With over 30 years experience, Supertrucks is the UK's number one manufacturer of vehicles built to carry glass.

Our panel van racks are produced from lightweight material to maximise your payload while maintaining our high quality finish. Installation can be undertaken while you wait. Contact our sales team for more information.

## Information

Custom bodies can be built on vehicles from 3.5 to 32 tonnes gvw. Sides can be sloping to accommodate an external rack or vertical to maximise space. Roof designs can be concertina opening or fixed. Our securing systems can be integrated to your requirements with either our patented scissor clamp or sliding rubber wedges. Incliners are fitted to all our vehicles.

Supertrucks Rental offers 3.5-tonne Mercedes-Benz panel vans with external frails, roof racks with ladders, and internal glass-carrying racks, one full length and the other shorter to allow side door access. Contact Supertrucks for our competitive rates and availability.

All glass carriers fitted by the Bevan Group have been cleared by the VCA and we are the only company that complies with current Type Approval regulations. The potential advantage in terms of reduced lead time is huge.

## Manufacturer Availability

**Our glass carriers are available on the following chassis cabs:**

- Citroen
- Fiat
- Ford
- Peugeot
- Isuzu
- Iveco
- Peugeot
- MAN
- Mercedes
- Mitsubishi
- Nissan
- Renault
- Scania
- Vauxhall
- Volvo
- Volkswagen

*“I’m very impressed with the frail, roof rack and internal rack, and especially the new, additional lights on the frail shelf. Supertrucks have made a great job of fitting of all of this to the vans”*

**Jason Doe**  
Benchmark Windows

## > Products & Services

# Icon

The Icon represents a major breakthrough in terms of both productivity and fuel efficiency.

### > 01.

#### Variety of Closure Option

Variety of rear closure options including shutters, doors and tail lifts

### > 02.

#### Captive Extrusions

Captive extrusions for maximum strength, weight reduction and fuel efficiency

### > 03.

#### Aerodynamic Front Collar

Aerodynamic moulded Luton front with collar kit





## Introduction

---

Developed in partnership with aerodynamics experts from Cranfield University and Hatcher Components, the ICON has a futuristic appearance and incorporates cutting-edge technology designed both to increase productivity and reduce the vehicle's operating costs and environmental impact.

## Information

---

The ICON's innovative, modular design was created by specialists employing three-dimensional CFD (Computational Fluid Dynamics) technology able to simulate genuine road conditions, and the honed in a wind tunnel using a full-scale model.

*“We have high hopes for the ICON, as a business we seek to exploit every opportunity to increase fuel efficiency and thereby reduce our carbon footprint, and raise productivity by gaining extra payload.”*

**Adam Baillie**  
Group Fleet Manager, Travis Perkins

> **Products & Services**

# Low Loaders

Bevan low loader bodies offer the ultimate in convenience, efficiency and safety.

## Introduction

---

There's no need to worry about access to your vehicle with our low loader bodies, which have an 'easy entry' loading height of just 41cm (410mm). The convenient access saves time and effort, making your business more efficient and profitable.

Our expert low loader builds are bespoke to your requirements with internal volumes ranging from 20.4 to 27.5 cubic metres, an industry-leading payload of at least 1,300kg, and twin rear axles as required. We can also offer an increased rear ground clearance whilst keeping the loading height to a minimum.

## Information

---

Our low loader bodies are built using lightweight and innovative products to create a light, durable and clean product with our three-year warranty as standard.

We can build low loader box or Luton bodies from a variety of class-leading chassis, providing a range of dimensions to suit your needs. Aerodynamic fronts are fitted as standard to increase volume of load, save your fuel and improve your sustainability.

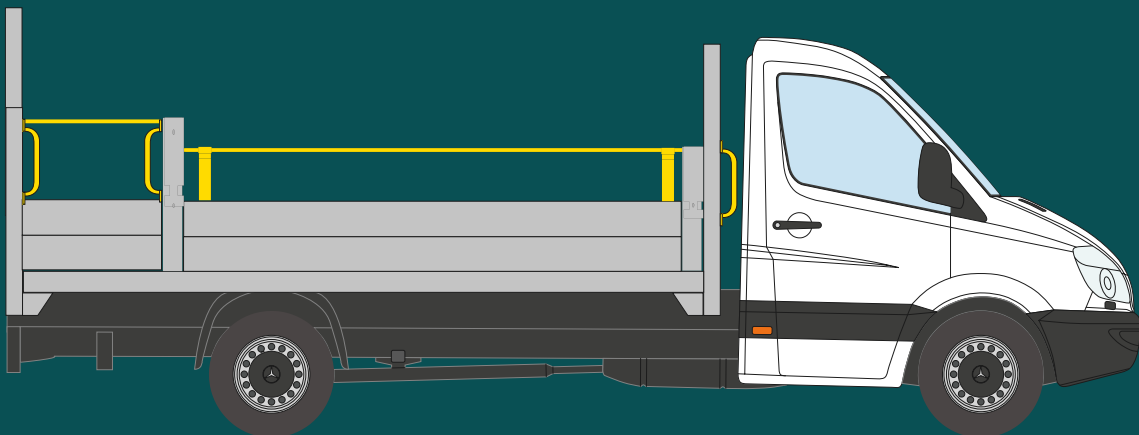
A variety of specification enhancements are available to tailor the vehicle specifically to the operator's requirements.

With customised body colours, vinyl graphics, internal restraint systems and walk-in loading ramps, we can create the right van for your needs.

## > Products & Services

# Construction: Traffic Management Vehicles

Tailored for operators working on or from the highway, there are no standard traffic management vehicles for this type of application.



## Information

---

This is why we work closely with both operators and contractors to ensure the vehicle is designed to their needs. Safety conscious and practically minded, these bodies are designed for the ever altering world of legislation and regulation. So whether you need Swing-Lifts and Lit Arrow Boards or a Parks Conservation and Motorway Maintenance, we have traffic management vehicles to guide you through the process.

## Manufacturer Availability

---

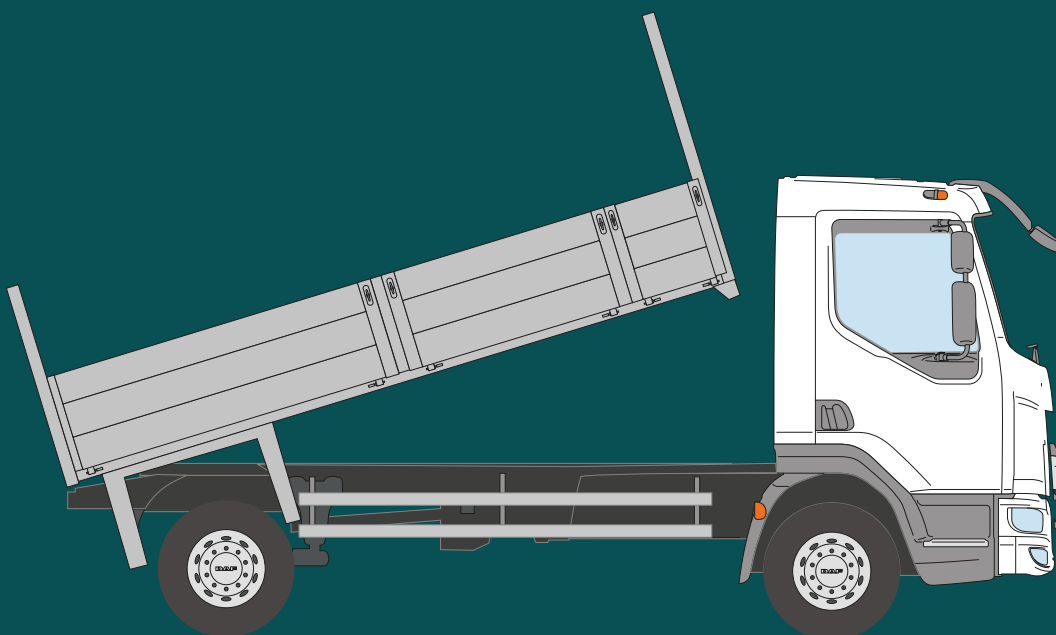
**Our glass carriers are available on the following chassis cabs:**

- Citroen
- Fiat
- Ford
- Peugeot
- Isuzu
- Iveco
- Peugeot
- MAN
- Mercedes
- Mitsubishi
- Nissan
- Renault
- Scania
- Vauxhall
- Volvo
- Volkswagen

## > Products & Services

# Construction: Dropside Tipper

Giving customers a high level of choice is integral to our services, and this is evident in our tipper body builders, which include lightweight bodies through to purpose-build, heavy-duty bodies for vehicles from 3.5 to 28 tonnes GVW.



## Introduction

---

Our dropside tipper body builders are the workhorses of the commercial vehicle sector. From 3.5 tonnes to 32 tonnes, you can be as multifaceted or as basic as you need. Their aluminium and steel construction techniques, as well as a variation of insulated and load specific bodies, offer a high quality and competitive value like no other.

## Information

---

Safety remains the number one priority in all our vehicles and our tippers have dedicated points of access to ensure heavy loads are discharged safely and efficiently.

## Manufacturer Availability

---

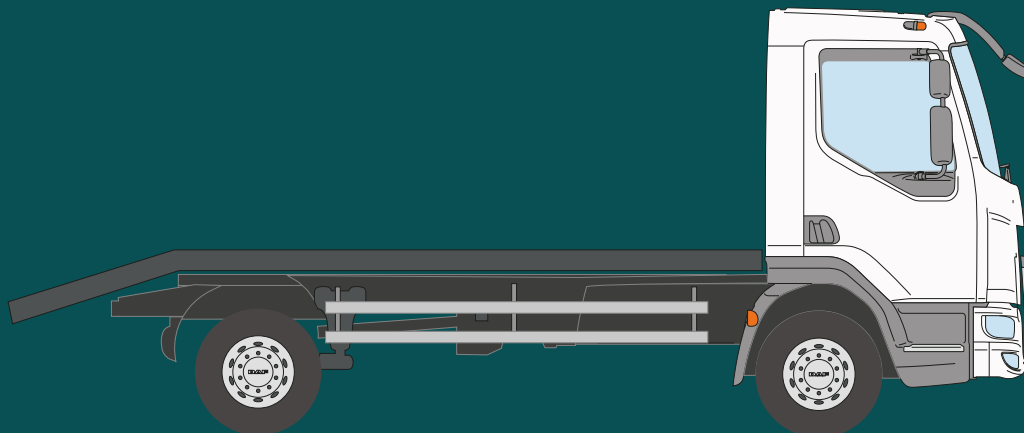
**Our glass carriers are available on the following chassis cabs:**

- Citroen
- Fiat
- Ford
- Peugeot
- Isuzu
- Iveco
- Peugeot
- MAN
- Mercedes
- Mitsubishi
- Nissan
- Renault
- Scania
- Vauxhall
- Volvo
- Volkswagen

> **Products & Services**

# Construction: Beaver-Tail Trucks

Beaver-tail trucks prove time again how important their place is in the commercial vehicle world.





## Information

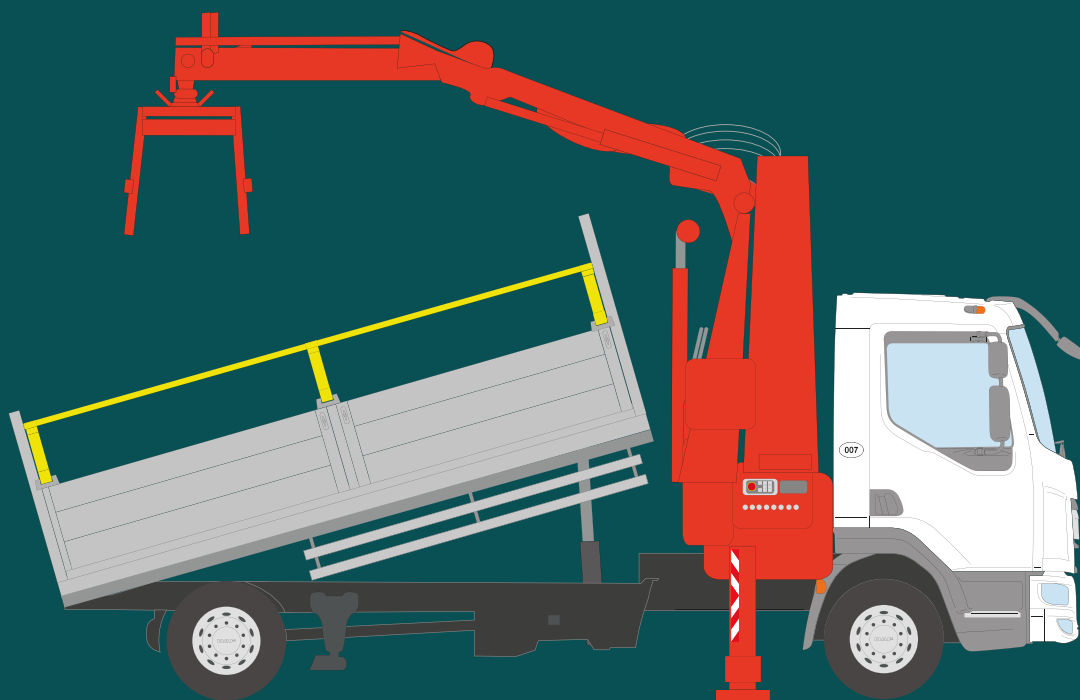
---

We continue to develop and adapt our design to accommodate the increasing demand for both payload and practicality. Our Beaver-tail trucks offers unique ranges of floor type, bespoke loading ramps, as well as solutions to stowage and restraint.

## > Products & Services

# Construction: Dropside Tipper Grab

The dropside tipper grab is an effective and functional body, allowing for significant variation in operational capability.



## Information

---

With the durability of a Sherman Tank but the weight conscious construction of a payload driven market, this body type never fails to impress even the most heavy handed or heavily loaded of operators.

## Manufacturer Availability

---

**Our glass carriers are available on the following chassis cabs:**

- Citroen
- Fiat
- Ford
- Peugeot
- Isuzu
- Iveco
- Peugeot
- MAN
- Mercedes
- Mitsubishi
- Nissan
- Renault
- Scania
- Vauxhall
- Volvo
- Volkswagen

## > Products & Services



# Services: Manufacturing

Manufacturing was where Bevan Group started in 1976 and it has since grown to be one of our largest services.

## Information

---

We are commercial body builders that manufacture more than 60 vehicle bodies every week, putting innovation, efficiency and longevity at the forefront of our work. This, combined with our team's wide-ranging skillset and expert training, enables us to deliver vehicle bodies for a variety of purposes and clients.

With 120,000 square feet of capacity across five modern facilities, we provide commercial vehicle bodies to sole traders and blue chip companies alike.

We create curtainsiders and dropside vehicles that are bespoke for every client and boast a comprehensive range of optional features, including lightweight aluminium versions to maximise payloads.

We're also helping commercial vehicle operators to achieve their carbon reduction targets. Our Bevan 21 is a streamlined rigid vehicle body able to reduce fuel bills by more than 15% (independent text carried out by Commercial Motor).

One of our responsibilities as commercial body builders is to ensure every vehicle is checked and tested rigorously. We always welcome clients to our production centres to see Bevan in action.

### The Commercial Vehicle Bodies We Offer Include:

---

- Bevan 21
- Glass carriers
- Box bodies
- Luton
- Curtainsiders
- Icon
- Dropsiders

## > Products & Services



# Services: Aftercare

Our highly skilled and qualified team provide a range of aftercare services, aiming to keep your vehicle on the road in 90 minutes or less.

We pride ourselves on our expertise and have 40 dedicated engineers and 150 UK approved engineers, making Aftercare the UK's largest mobile network.

## Information

---

### **Roadside Assistance - 90 minute breakdown response with 24 hour coverage of the UK**

When you need roadside assistance, we get to you within 90 minutes, 24 hours a day. We repair at the roadside, whenever possible, at our hi-tech facilities or at your own site, at your convenience.

### **Vehicle Repairs - Full roadside and off road repair and maintenance direct recovery to our repair centre, if necessary**

Our onsite vehicle repairs gets your commercial vehicles back on the road in the minimum amount of time, with the minimum inconvenience and the minimum loss to your business. Our repairs vary, ranging from general body repairs such as roofs and floors, to larger scale repairs such as tail lift, winch, shutter door and curtains.

### **Vehicle Maintenance Contracts - Regular body maintenance for reduced vehicle downtime**

We will provide you with a vehicle maintenance contract customised to your vehicle's specific needs, offering repair and maintenance packages on shutter doors, fridge bodies and tail lifts.

### **Express Parts - The highest quality spare parts for any vehicle of any manufacturer**

Our Express Parts service gives you the highest quality standard, non-standard and specialist spare parts for any vehicle, of any manufacturer. We have a comprehensive express parts portfolio, consisting of side guards, panels and rear closures, alongside fasteners, sealants and electrical equipment such as LED lights and reversing beepers.

### **Bolt Ons – Recommended extras including compliance kits, tail lifts and bespoke safety features**

Make the most of the full range of services under Aftercare Response with our bolt ons. These recommended extras include:

**Bevan Vehicle Compliance Kits – These help your business to comply with FORS, CLOCS, London Safer Lorry Scheme and Crossrail safety standards that have been implemented in construction sites and restricted traffic areas throughout the UK. These offer:**

- Reversing camera kits and tail lifts
- Bespoke safety features such as our patented Safety-T-Drop System
- Convenient repair services to suit your schedule
- Onsite inspections by qualified engineers
- Extended warranties and insurance accreditations
- Regular body maintenance for reduced vehicle downtime

### **Tail Lift Services - Supply, fit and repair of tail and mobility lifts on your site**

Aftercare's Tail Lift Services includes the supply, fit and, if need be, repair of tail and mobility lifts on your site. We will come to your site at a time that suits you, allowing your business to run as normal and have no downtime of vehicle movement. We can also take care of all your vehicle Type Approval and Certifications.

> **Products & Services**



# Services: Graphics

Whether it be a van, a regional or national fleet, Bevan Graphics can provide a visual solution for when you're on the road.



## Information

---

Our specialist graphics and livery team puts visual impact, durability and longevity at the forefront of its vehicle graphics. We combine the latest design software with large format printing technology and high quality materials from brands including 3M, Avery, Arlon, Metamark and Oracle.

All of our vehicle graphics are designed in house, where they are then printed onto vinyl and cut for adhesive application. We ensure that they are fully waterproof and highly resilient.

### Commercial vehicles

We provide a complete livery service for all commercial vehicles, from a single vehicle to a complete fleet. Your vehicle graphics will do the talking and will showcase your brand when you're on the road.

- Accident Livery Repair
- Conspicuity Tape
- Fleet Vehicle Branding
- Legal Stickers
- Chapter 8

### Vehicle wrapping

We'll give your vehicle a design overhaul with our slick, stylish and striking colour wraps. They're temporary, easily reversible and cost significantly less than respraying.

- Colour Change Wraps
- Bonnet Wraps
- Roof Wraps

To speak to a member of our friendly Graphics team, just call 0121 585 2960. Alternatively, you can visit our separate website, Complete Graphic, where you can find out exactly how our commercial vehicle specialists let your brand come to life.

## > Products & Services

# Services: Passport



We can take the strain of compliance with the European Community Whole Vehicle Type Approval (WVTA) scheme by welcoming you to our Bevan Passport initiative.

## Information

---

We work alongside each Passport licensee to ensure compliance is maintained and take away as much worry from you as possible about the requirements of the directive. We breakdown the requirements into simple terms and demonstrate how they apply in a practical and straightforward way – whilst being on hand to answer any questions that may come your way.

Just contact our friendly team to find out how the Bevan Passport can keep your vehicles on the right side of the law.

## > Products & Services



# Services: Glass Carriers

Professional, experienced and skilled, the Supertrucks team is the first choice for whole vehicle glass-carrying systems, van conversions, low loader Space Vans and much more.

## Information

---

We invented the glass carrying rack – literally – and named it the frail, after the characteristic of the material it was designed to carry safely. You'll still hear glass carrying racks called frails to this day.

Based in St Helens, at the heart of the glass industry, we serve both the UK and export markets. We work with high-profile blue chip companies and sole traders alike, with exactly the same high standards of products and service.

A few of our well-known customers include Pilkington, IG Glass, Solaglas Saint-Gobain, Gibbs & Dandy, Float Glass Industries and Theodor Schmid GmbH.

## > Products & Services

# Services: Response



When you need roadside response, we get to you within 90 minutes, 24 hours a day. We repair at the roadside, whenever possible, at our high-tech facilities or at your own site, whatever works best for your business.

## Information

---

Our onsite vehicle repairs get your commercial vehicles back on the road quickly, with the minimum vehicle downtime or loss to your business. Our repairs vary, ranging from general body repairs such as roofs and floors, to larger scale repairs such as tail lift, winch, shutter door and curtains.

We pride ourselves on our expertise and have 40 dedicated engineers and 150 UK approved engineers, making Aftercare the UK's largest roadside response mobile network.

Our team carries equipment including a mobile MIG welder, generator, 110 bar compressor, access ladders and much more, attending to trailers, rigid bodies, dry freight and refrigerated vehicles.

Combined with our fast parts delivery and onsite repairs service, roadside response is a critical service for every commercial vehicle operator.

To speak to a member of our Response team, just call 08443 222333. Alternatively, visit our separate Aftercare Response website where you'll find more information about the service that has now become a business in itself.

## > Products & Services

# Services: Parts

Our expert parts team is ready and able to source and deliver the highest quality spare parts for any Bevan vehicle, Bevan or otherwise, of any manufacturer and deliver them fast.



## Information

---

The highest quality standard, non-standard and specialist spare parts are all available, including genuine tail lift and shutter door parts.

Side guards, panels, side and rear closures, dropside parts, wings, load restraints and much more can all be found in our comprehensive parts portfolio, alongside fasteners, sealants and electrical equipment such as LED lights and reversing beepers.

Our fast, friendly and knowledgeable team puts your customer needs first, so just get in touch to find out how Bevan Parts can help to keep your fleet on the road – and fast!

## > Products & Services



# Services: Specialist Products

We are expert truck body builders known industry wide for offering high quality services to local authorities, including councils and highways, throughout the UK.

## Information

---

Bevan Specialist Products provides vehicle bodywork tailored to the needs of your business. We work closely alongside end users and fleet engineers to ensure quality, operational integrity and safety throughout. We're also fully incorporated into the Bevan Passport scheme and can offer high quality commercial bodies for a variety of chassis models.

### **Our truck body builders manufacture the following:**

- Dropside tipper
- Dropside tipper grab
- Traffic management vehicles
- Beaver-tail trucks

### **Give us a call on:**

+44 (0)121 585 2960

### **Send us an email:**

info@bevangroup.com

### **Our address:**

Wednesbury One  
Black Country New Road  
Wednesbury  
West Midlands  
WS10 7NZ

**Bevan** GROUP

