



NORTHERN PRECISION LTD

Specialist Fasteners for Sheet Metal

✓ Quality ✓ Service ✓ Reliability



UK/01/1315137298

CROWN NUTS 2021

Tel: +44 (0) 1302 836010
Fax: +44 (0) 1302 836012
sales@npfasteners.com



www.npfasteners.com

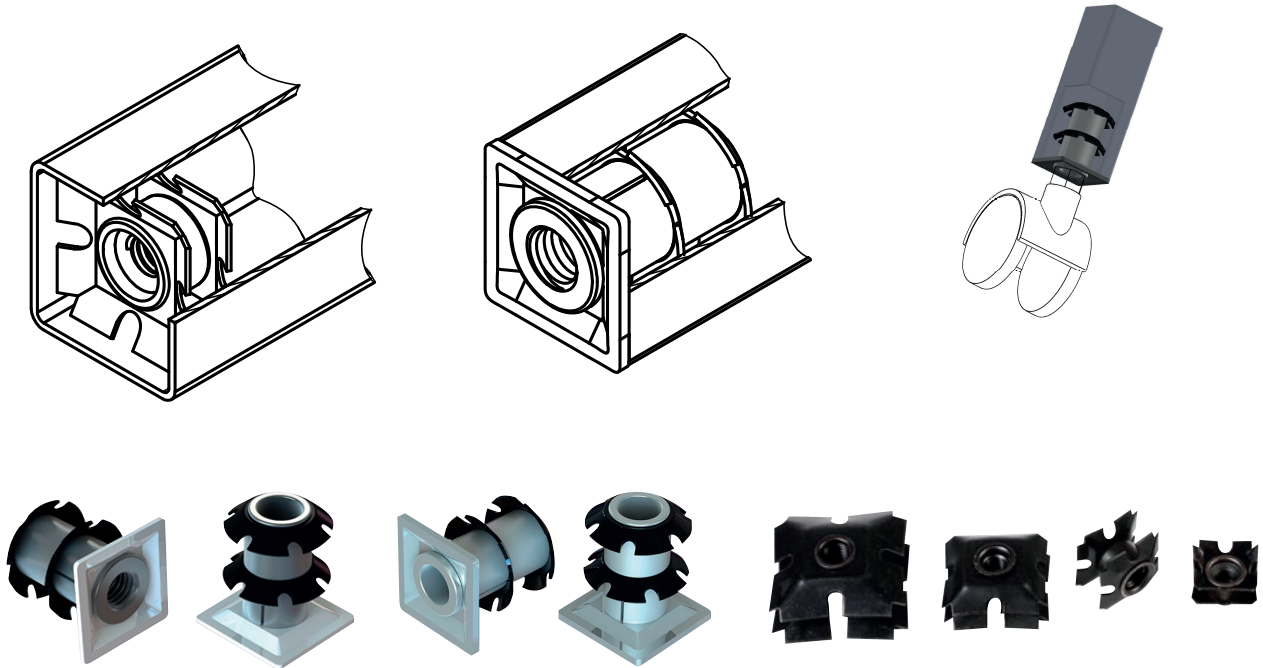
CROWN NUTS

Crown nuts are a simple way of installing a thread into round tubes and square box sections. Available in M8 - M10, in the headed version, and M6 - M10 in the un-headed version. They are also available with an 11.3mm internal hole to accept a standard castor wheel.

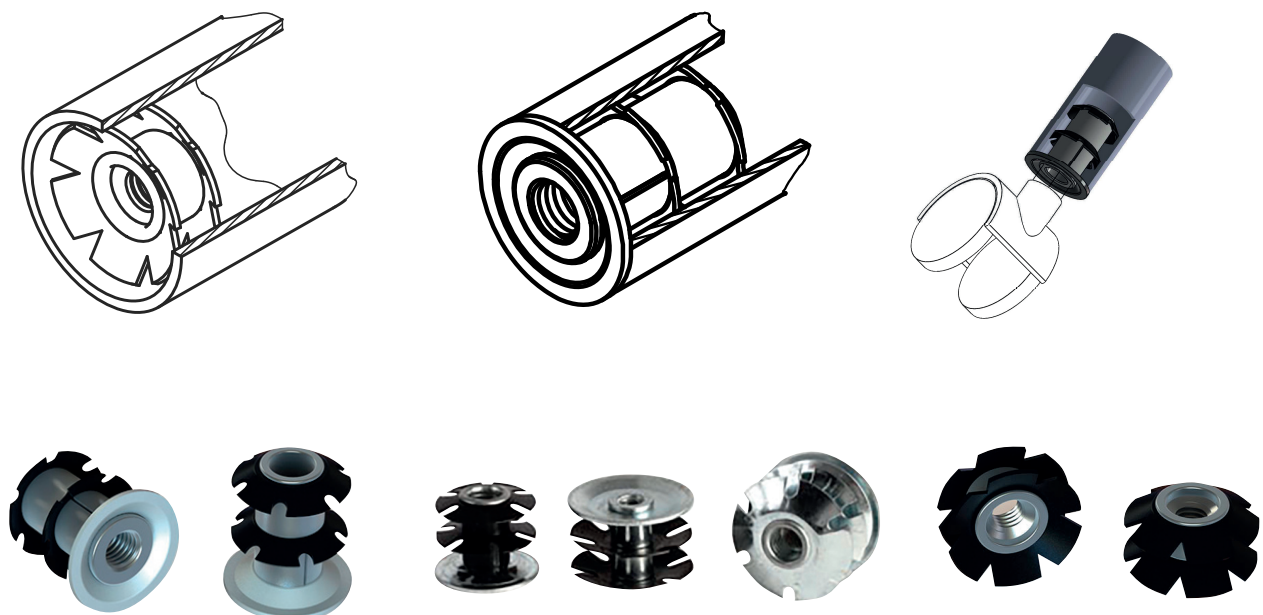
Crown nuts are simply pressed into the end of the tube or box section and provide a strong re-usable female thread.

Available for tubes I/D 11.8mm - 58mm.

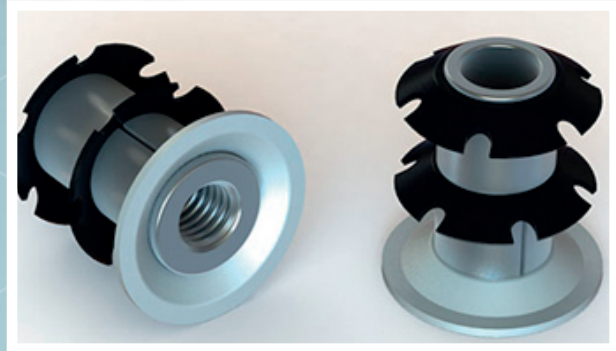
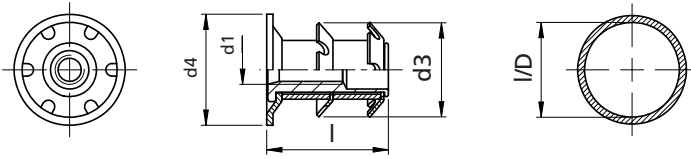
Square Box Section



Round Tube Section



CROWN NUT - ROUND HEADED, THREADED



HEADED INSERT FOR THE INTERIOR OF ROUND TUBES

APPLICATION to install a strong reusable female thread into round tubes.

ASSEMBLY by pressure.

SPECIFICATION

PART NUMBER	d1	I/D	d3	l	d4
ITT2T M8 14.8	M8	14.8 - 16.1	17,0	26	19
ITT2T M8 16.4		16.4 - 17.7	18,7		19
ITT2T M8 17.9		17.9 - 19.3	19,7		22
ITT2T M8 18.9		18.9 - 20.2	21,0		22
ITT2T M8 19.5		19.5 - 20.9	21,6		22
ITT2T M8 21.4		21.4 - 22.4	23,5		25
ITT2T M8 22.1		22.1 - 23.4	24,6		25
ITT2T M8 22.7		22.7 - 24.0	25,4		25
ITT2T M8 24.6		24.6 - 25.6	26.5		28
ITT2T M8 25.3		25.3 - 26.6	27,6		29
ITT2T M8 26.0		26.0 - 28.0	28,9		30
ITT2T M8 28.4		28.4 - 29.8	30,8		32
ITT2T M8 31.7		31.7 - 32.9	33,7		35
ITT2T M8 34.8		34.8 - 36.1	37,1		38
ITT2T M8 56.0		56.0 - 58.0	59,9		60
ITT2T M10 18.9		M10	18.9 - 20.2		21,6
ITT2T M10 21.4	21.4 - 22.4		23,5	25	
ITT2T M10 22.7	22.7 - 24.0		25,4	25	
ITT2T M10 24.6	24.6 - 25.6		26.5	28	
ITT2T M10 26.0	26.0 - 28.0		28,9	30	
ITT2T M10 28.4	28.4 - 29.8		30,8	32	
ITT2T M10 31.7	31.7 - 32,9		33,7	35	
ITT2T M10 34.8	34.8 - 36.1		37,1	38	
ITT2T M10 36.0	36.0 - 38.0		39,0	40	

Non binding dimensions, expressed in mm.

* It is advisable to carry out some preliminary assembling tests in order to determine the best product. After the insertion of the Crown Nut avoid heat treatments, galvanization and other heating operations that might compromise the characteristics of the product.

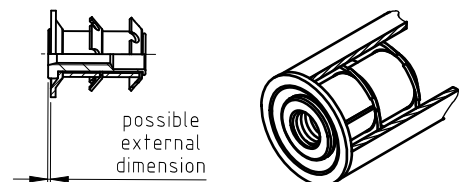
INFORMATION

MATERIAL

Steel

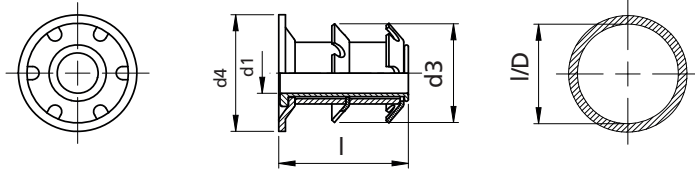
EXAMPLE

2 crowns headed insert for round tubes, M8 threaded, for tube I/D 19.5 - 20.9: ITT2T M8 19.5



For detailed installation guides and performance data visit www.npfasteners.com

CROWN NUT - ROUND HEADED, UNTHREADED



HEADED INSERT FOR THE INTERIOR OF ROUND TUBES QUICK PRESS-IN SOCKET FOR CASTORS

APPLICATION to install an 11.3mm internal socket to attach standard castors.

ASSEMBLY by pressure.

SPECIFICATION

PART NUMBER	d1	I/D	d3	l	l4
ITT2T D11.3 18.9	11,3	18.9 - 20.2	21,0	38,1	22
ITT2T D11.3 21.4		21.4 - 22.4	23,5		25
ITT2T D11.3 22.1		22.1 - 23.4	24,6		25
ITT2T D11.3 22.7		22.7 - 24.0	25,4		25
ITT2T D11.3 24.6		24.6 - 25.6	26,5		28
ITT2T D11.3 25.3		25.3 - 26.6	27,6		28
ITT2T D11.3 28.4		28.4 - 29.8	30,8		32
ITT2T D11.3 31.7		31.7 - 32.9	33,7		35
ITT2T D11.3 34.8		34.8 - 36.1	37,1		38
ITT2T D11.3 37.3		37.3 - 39.3	40,2		42
ITT2T D11.3 41.4		41.4 - 42.4	43,5		45
ITT2T D11.3 47.5		47.5 - 48.8	50		51

Non binding dimensions, expressed in mm.

* It is advisable to carry out some preliminary assembling tests in order to determine the best product.

After the insertion of the Crown Nut avoid heat treatments, galvanization and other heating operations that might compromise the characteristics of the product.

INFORMATION

MATERIAL

Steel

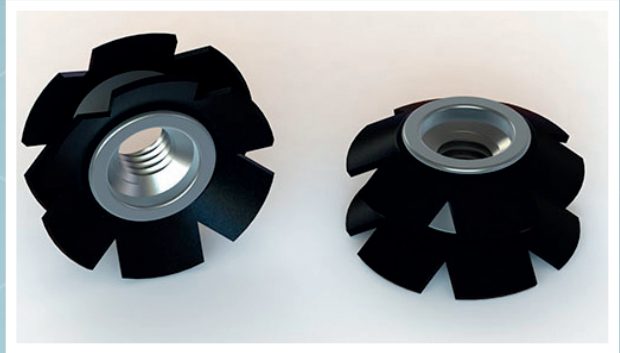
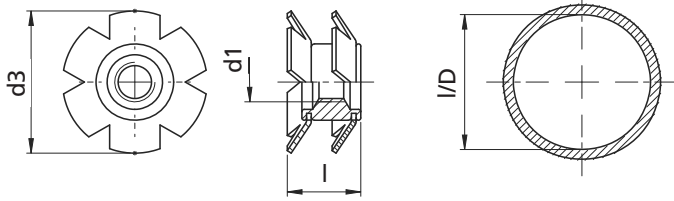
EXAMPLE

2 crowns headed insert for round tubes, quick press-in socket for castors,
for tube I/D 18.9 - 20.2: ITT2T D11.3 18.9



For detailed installation guides and performance data visit www.npfasteners.com

CROWN NUT - ROUND UN-HEADED



ROUND INSERT FOR THE INTERIOR OF ROUND TUBES

APPLICATION to install a strong reusable female thread into round tubes.

ASSEMBLY by pressure.

SPECIFICATION														
PART NUMBER	d1	I/D	d3	l	PART NUMBER	d1	I/D	d3	l	PART NUMBER	d1	I/D	d3	l
ITT2S M6 11.8	M6	11.8 - 12.2	12.8	12.5	ITT2S M8 15.2	M8	15.2 - 16.1	17	12.5	ITT2S M10 17.9	M10	17.9 - 19.3	20.3	13
ITT2S M6 12.6		12.6 - 13.2	13.6	10	ITT2S M8 15.7		15.7 - 17.1	18.1	12.5	ITT2S M10 18.9		18.9 - 20.2	21	12.5
ITT2S M6 13.2		13.2 - 13.8	14.7	12.5	ITT2S M8 16.4		16.4 - 17.7	18.7	12.4	ITT2S M10 19.5		19.5 - 20.9	21.7	12.5
ITT2S M6 13.8		13.8 - 14.2	14.7	12.5	ITT2S M8 17.9		17.9 - 19.3	20	13	ITT2S M10 21.4		21.4 - 22.4	23.2	13.5
ITT2S M6 15.2		15.2 - 16.1	17	10	ITT2S M8 19.5		19.5 - 20.9	21.5	14.5	ITT2S M10 22.1		22.1 - 23.4	25	14
ITT2S M6 15.7		15.7 - 17.1	18.1	9.4	ITT2S M8 21.4		21.4 - 22.4	23.4	13	ITT2S M10 24.6		24.6 - 25.6	26.2	13.8
ITT2S M6 16.4		16.4 - 17.7	18.7	9.5	ITT2S M8 22.7		22.7 - 24.0	25.4	14	ITT2S M10 26.0		26.0 - 28.0	28.9	15
ITT2S M6 17.9		17.9 - 19.3	19.7	9.5	ITT2S M8 24.6		24.6 - 25.6	26.5	13.3	ITT2S M10 28.4		28.4 - 29.8	30.7	13.5
ITT2S M6 18.9		18.9 - 20.2	21	9.5	ITT2S M8 25.3		25.3 - 26.6	27.6	13.5	ITT2S M10 31.7		31.7 - 32.9	33.8	14.3
ITT2S M6 19.5		19.5 - 20.9	21.7	11	ITT2S M8 26.0		26.0 - 28.0	28.4	13	ITT2S M10 34.8		34.8 - 36.1	37.3	16.5
ITT2S M6 21.4		21.4 - 22.4	23.2	10	ITT2S M8 28.4		28.4 - 29.8	30.6	15	ITT2S M10 36.0		36.0 - 38.0	39	15.2
ITT2S M6 22.1		22.1 - 23.4	24.6	10	ITT2S M8 29.8		29.8 - 30.8	31.8	14	ITT2S M10 38.4		38.4 - 40.4	41.6	16
ITT2S M6 22.7		22.7 - 24.0	25.4	10.5	ITT2S M8 31.7		31.7 - 32.9	33.6	15	ITT2S M10 47.5		47.5 - 48.8	50	17
ITT2S M6 24.6		24.6 - 25.6	26.6	9.5	ITT2S M8 34.8		34.8 - 36.1	37	16	ITT2S M10 56.0		56.0 - 58.0	60	16.8
ITT2S M6 25.3		25.3 - 26.6	27.6	10	ITT2S M8 36.0		36.0 - 38.0	39	15.3					
ITT2S M6 26.0		26.0 - 28.0	28.4	10	ITT2S M8 38.4		38.4 - 40.4	41.3	15.5					
ITT2S M6 28.4		28.4 - 29.8	30.6	11.5	ITT2S M8 41.4		41.4 - 42.4	43.5	16.4					
ITT2S M6 29.8		29.8 - 30.8	31.8	10										
ITT2S M6 31.7		31.7 - 32.9	33.8	13										

Non binding dimensions, expressed in mm.

* It is advisable to carry out some preliminary assembling tests in order to determine the best product.

After the insertion of the Crown Nut avoid heat treatments, galvanization and other heating operations that might compromise the characteristics of the product.

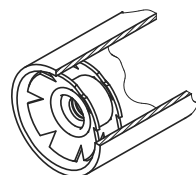
INFORMATION

MATERIAL

Steel

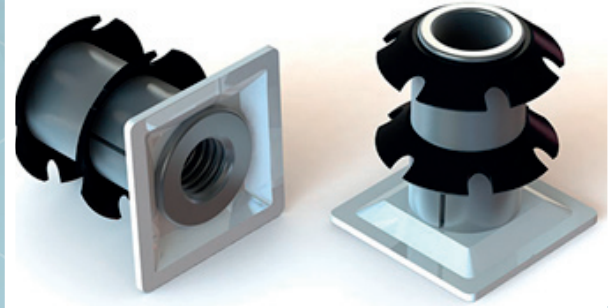
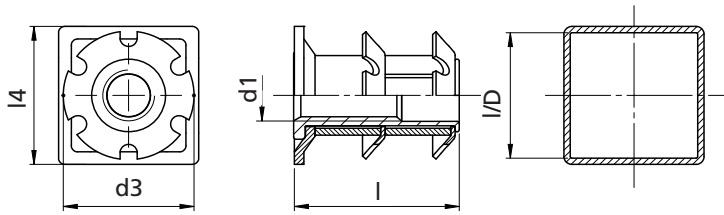
EXAMPLE

2 crowns un-headed insert for round tubes,
M6 threaded, for tube I/D 19.5 - 20.9: ITT2S M6 19.5



For detailed installation guides and performance data visit www.npfasteners.com

CROWN NUT - SQUARE HEADED, THREADED



HEADED INSERT FOR THE INTERIOR OF SQUARE BOX SECTION

APPLICATION to install a strong reusable female thread into box section.

ASSEMBLY by pressure.

SPECIFICATION

PART NUMBER	d1	I/D	d3	l	l4
ITT2Q M8 15.7	M8	15.7 - 17.1	18,1	26	19
ITT2Q M8 18.9		18.9 - 20.2	20,9		22
ITT2Q M8 22.1		22.1 - 23.4	24,7		25
ITT2Q M8 25.3		25.3 - 26.6	27,5		28
ITT2Q M8 26.6		26.6 - 27.6	28,9		30
ITT2Q M8 28.4		28.4 - 29.8	30,7		32
ITT2Q M8 34.8		34.8 - 36.1	37,9		38
ITT2Q M10 22.1	M10	22.1 - 23.4	24,7	26	25
ITT2Q M10 26.6		26.6 - 27.6	28,8		30
ITT2Q M10 34.8		34.8 - 36.1	37,9		38

Non binding dimensions, expressed in mm.

* It is advisable to carry out some preliminary assembling tests in order to determine the best product.

After the insertion of the Crown Nut avoid heat treatments, galvanization and other heating operations that might compromise the characteristics of the product.

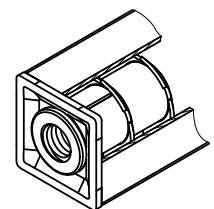
INFORMATION

MATERIAL

Steel

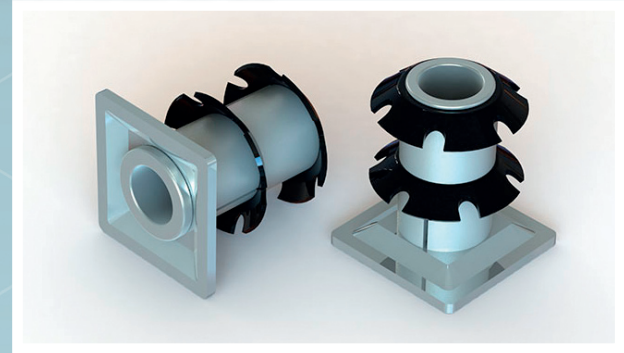
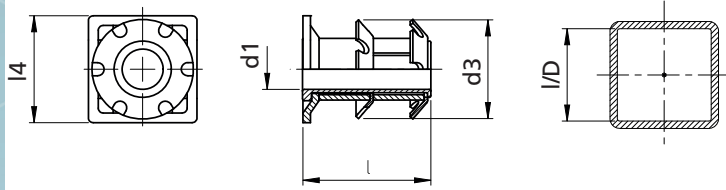
EXAMPLE

2 crowns headed insert for square box section, M8 threaded,
for box section I/D 22.1 - 23.4: ITT2Q M8 22.1



For detailed installation guides and performance data visit www.npfasteners.com

CROWN NUT - SQUARE HEADED, UNTHREADED



HEADED INSERT FOR THE INTERIOR OF SQUARE BOX SECTION QUICK PRESS-IN SOCKET FOR CASTORS

APPLICATION to install an 11.3mm internal socket to attach standard castors.

ASSEMBLY by pressure.

SPECIFICATION

PART NUMBER	d1	I/D	d3	l	I4
ITT2Q D11.3 18.9	11,3	18.9 - 20.2	21	38,1	22
ITT2Q D11.3 22.1		22.1 - 23.4	24,6		25
ITT2Q D11.3 25.3		25.3 - 26.6	27,6		28
ITT2Q D11.3 26.4		26.4 - 27.8	28,8		30
ITT2Q D11.3 28.4		28.4 - 29.8	30,6		32
ITT2Q D11.3 34.8		34.8 - 36.1	37		38
ITT2Q D11.3 41.4		41.4 - 42.4	43,5		45
ITT2Q D11.3 47.5		47.5 - 48.8	50		50

Non binding dimensions, expressed in mm.

* It is advisable to carry out some preliminary assembling tests in order to determine the best product.

After the insertion of the Crown Nut avoid heat treatments, galvanization and other heating operations that might compromise the characteristics of the product.

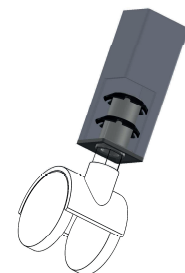
INFORMATION

MATERIAL

Steel

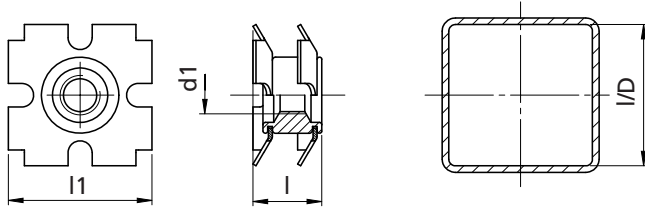
EXAMPLE

2 crowns headed insert for square box section, quick press-in socket for castors, for box section I/D 22.1 - 23.4: ITT2Q D11.1 22.1



For detailed installation guides and performance data visit www.npfasteners.com

CROWN NUT - SQUARE UN-HEADED



SQUARE INSERT FOR THE INTERIOR OF SQUARE BOX SECTION

APPLICATION to install a strong reusable female thread into box section.

ASSEMBLY by pressure.

SPECIFICATION

PART NUMBER	d1	I/D	l1	l
ITQ2S M6 15.7	M6	15.7 - 17.1	18.3	11
ITQ2S M6 17.6		17.6 - 18.1	19.3	10
ITQ2S M6 18.9		18.9 - 20.2	21.6	10
ITQ2S M6 22.1		22.1 - 23.4	24.3	14.2
ITQ2S M6 26.0		26.0 - 28.0	29.2	12
ITQ2S M8 15.7	M8	15.7 - 17.1	18	15
ITQ2S M8 18.9		18.9 - 20.2	21.4	14
ITQ2S M8 22.1		22.1 - 23.4	24.3	13.8
ITQ2S M8 26.0		26.0 - 28.0	29.1	16.2
ITQ2S M8 34.8		34.8 - 36.1	37.4	17.3

Non binding dimensions, expressed in mm.

* It is advisable to carry out some preliminary assembling tests in order to determine the best product.

After the insertion of the Crown Nut avoid heat treatments, galvanization and other heating operations that might compromise the characteristics of the product.

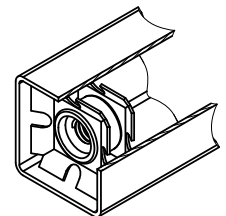
INFORMATION

MATERIAL

Steel

EXAMPLE

2 crowns un-headed insert for square box section, M6 threaded, for box section I/D 18.9 - 20.2: ITQ2S M6 18.9



For detailed installation guides and performance data visit www.npfasteners.com