



RECOL

**THE COMPLETE MANUFACTURING
SOLUTION**

**World class providers of sheet
metal fabrication, precision
machined components and
mechanical assemblies**





RECOL

**THE COMPLETE MANUFACTURING
SOLUTION**

Engineering: The Dream

Recol's philosophy is, and has always been, focused on technology, pushing the limits of what is available, driving to give our customers the highest quality, competitive prices and the right delivery solutions.

Through technology our running costs are continuously reducing, negating the need for labour rate increases to our customers. Ultra fast Fibre lasers, more efficient Press Breaks, faster and more environmentally friendly paint lines and with some of the fastest mills and lathes available we push the possible every day.

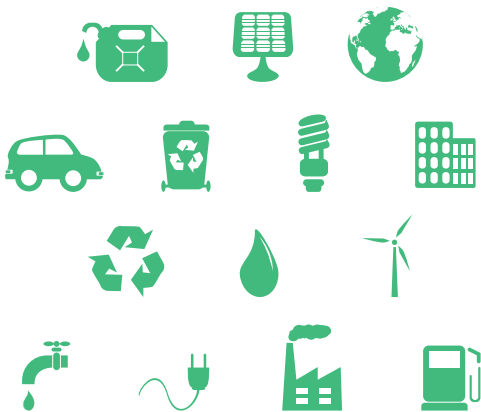
Our DFM processes not only focus on cost reduction but also on environmental issues, reducing wled = reduced CO2, greener re-useable packaging solutions stop unnecessary landfill, electric forklifts reduces emissions.

Waste management and recycling - everything that we can recycle we do. Metal waste is easy, paper and card is also well catered for, in fact nearly everything we use has a waste solution in place, but stopping using it in the first place must remain the main focus and this our goal.

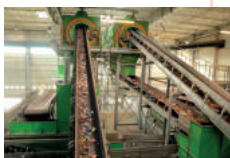
Recol's philosophy is to maintain pole position to ensure we are riding the evolutionary wave.



Recol is a highly efficient ECO company, from our investments in the latest technology, which are super energy efficient, to our extensive recycling program.

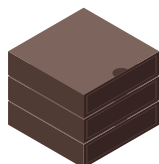


As much as possible our energy is provided from renewable sources. We constantly review our energy usage and our ability to generate our own energy and gases



Our waste is separated

Sorted and categorised



Returned as recycled packaging

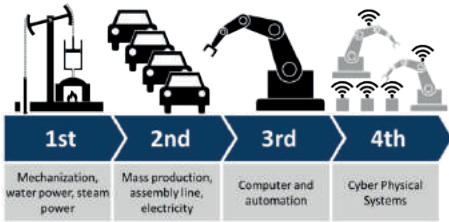




THE COMPLETE MANUFACTURING SOLUTION



Industry 4.0 Ready - Join the Evolution



Recol is focused on continuous improvement, reduced movement and error reduction, industry 4.0 is very much a vision that we intend to achieve and excel with.

With recent investments in the latest plant all industry 4.0 ready this now means that our manufacture facility is full connected, this coupled with one of the leading ERP systems for our industry makes Recol one of the first sub-contract suppliers in the UK to offer industry 4.0 to its customers.



Digital Download ✓

Purchase orders downloaded to our ERP direct for our customers ERP, eliminating any entry errors.



ARE YOU READY TO JOIN THE EVOLUTION?



CAD

Advanced planning and scheduling



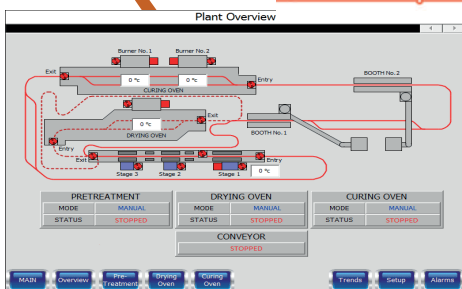
Full control of shop floor loading at a personnel level, allowing total flexibility on all areas of the business

Digital Upload ✓

Delivery notes, invoices and statements

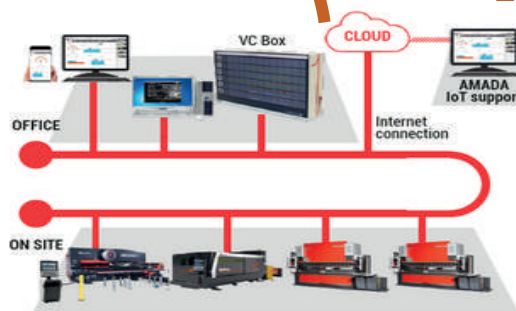


Queue Jump



Paint plant visibility

Live plant status, feeding direct to production



Total machine control and analysis

Live machine status, machine reports direct to the machine manufacturer giving preventative maintenance



Digital Drawing

Digital PO

Digital C of C

Digital WO

Digital Invoice

Digital Delivery Note





**World-class engineering,
Re-engineered.**