



**ALPHA**  
manufacturing



# PRECISION SHEET METAL FABRICATION

---

**Multi Award-Winning UK Manufacturer**

# OUR DIVISIONS

Based in Hixon, Staffordshire, Alpha Manufacturing is proud to be an industry leading sub-contract sheet metal fabrication supplier. Recently, we have expanded to include two new divisions in 2020 and 2021 to facilitate demand for our services.

## Alpha Manufacturing Chemical Technologies

With building work starting in 2021, our Chemical Technologies 35,000 sq. ft production facility in Beacon park, Stafford will start production in summer 2022.



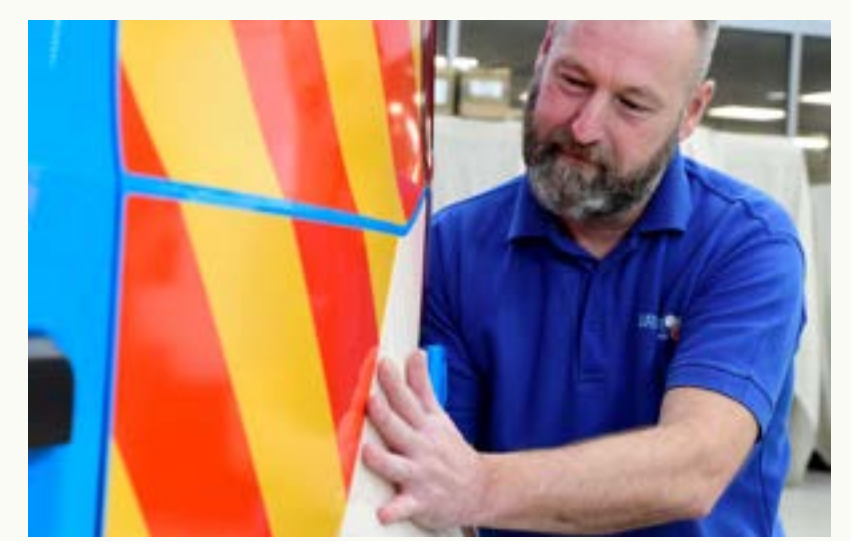
## Alpha Manufacturing Integrated Solutions

Opened in 2020, our Hixon Airfield division, Integrated Solutions, is dedicated to assembly and integration.

## Alpha Manufacturing HQ

Established in 1989, our headquarters are based in Hixon, Staffordshire on a 35 acre shared site with our sister companies.

# About The Group



## Bri-Stor Systems

- Established 1983
- Light commercial vehicle conversions
- 250 employees
- £35 million turnover

## Alpha Manufacturing

- Established 1985
- Precision sheet metal fabrication
- 170 employees
- £20 million turnover

## Atlas Coating

- Established 1993
- Commercial powder coating service
- 30 employees
- £2 million turnover

## HEX Graphics

- Established 2011
- Commercial signs and graphics service
- 35 employees
- £2 million turnover



A division of Alpha, HEX Living was launched this year and is the UK's leading manufacturer of premium-quality, heavy duty outdoor storage solutions.



# About Alpha



## MULTI AWARD-WINNING MANUFACTURER

We are proud to have been recognised as Manufacturer of the Year 2021 twice at both Staffordshire Chambers of Commerce and the East Staffordshire and South Derbyshire Business Awards.



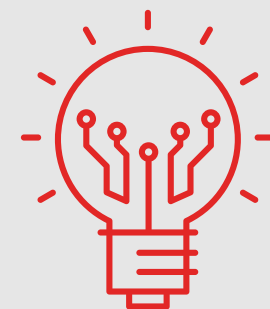
## OUR PEOPLE

Alpha now employs over 170 people from designers and engineers to production staff, welders and machine operators, combining a diverse range of skills and knowledge into an expert, integrated solution for businesses across the globe.



## LIGHTS OUT CAPABILITY

24 hours a day, 7 days a week lights out manufacturing



## INDUSTRY 4.0

As a privately owned business, our profits are invested back into our business to make sure we are continually heading towards our smart factory goals

# Team Alpha



**Paul Clews**

Managing Director



**Martin Smith**

Group CEO



**Robin Eley**

Commercial Director



**Alison Keates**

Customer Service Executive



**Michael Whitfield**

Commercial Manager



**Corey Hammond**

Technical Sales Engineer



## GROUP APPRENTICESHIP SCHEME

- Over **10 years** experience delivering quality Apprenticeships
- **100%** pass rate for over **100** Apprentices
- Dedicated on-site **learning suite**
- Experienced **Apprentice Manager**
- Training providers include **The JCB Academy** and **Stafford College**
- Production Engineer Gemma Smith has won **Apprentice of the Year** at both Staffordshire Chambers of Commerce and East Staffordshire and South Derbyshire Awards



# ALPHA MANUFACTURING CHEMICAL TECHNOLOGIES

---

The new facility is designed and built to facilitate the manufacture of components for INEOS Electrochemical Solutions. Operating as Alpha Manufacturing Chemical Technologies, this development further builds on the launch of Alpha Integrated Solutions – a dedicated fabrication facility located down the road from Alpha's 85,000 sq. ft principal facility in Hixon.





# SUSTAINABLE MANUFACTURING

**leading the way in  
environmental initiatives**

Alpha is already exceeding its 5-year targets to reduce energy consumption, waste to landfill and increase recyclable waste,



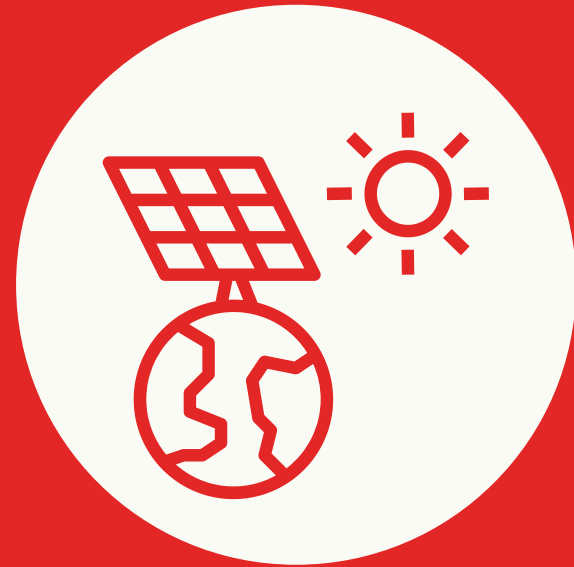
Converted all lighting on premises to CEMA LED Lighting, reducing our kWh production by nearly half a million.



A project is under way to have switched completely to solar power in the next four years, which will see 1960 solar panels installed on our factory roof.



We have switched to three bailers and one mini-compact to decrease the amount of waste that goes to landfill, reducing our carbon footprint by 75%.



# INVESTMENT TIMELINE



**2017**  
TruBend Robotic Fold  
Cell



**2019**  
Salvagnini P4 Lean  
Panel Bender



**2016**  
STOPA Storage System  
& TruLaser 3030 Fibre  
Laser



**2018**  
TruPunch 5000 CNC  
Punch



**2021**  
Alpha Manufacturing  
Chemical Technology  
factory



# PROCESSES

Since its founding in 1989, Alpha Manufacturing has developed into a leading precision sheet metal fabrication supplier, utilising the latest machinery to offer the complete range of sheet metal services.



# STOPA STORAGE SYSTEM

---

In 2016, we acquired the longest STOPA Storage System in the UK, helping us progress towards our Industry 4.0 goals.. The spine of the factory, our STOPA enables us to hold a large variation of materials and automate our production process.

- ✓ Trumpf SheetMaster material loading/unloading
- ✓ Integrated 3030 Fibre Laser, TruPunch S12 5000, Trumpf TruMatic 6000 Punch/Laser Combination

# CNC LASER CUTTING

---

Utilising the latest in laser cutting technology including CO<sub>2</sub> & fibre laser machines, we are able to offer a versatile precision laser cutting service in various material types, from mild and stainless steel to wood and plastics.

- ✓ Trumpf TruLaser 3030 Fibre Laser
- ✓ Trumpf TruMatic 6000 Laser/Punch Combination
- ✓ Bystronic BySprint Fibre 4020 & Bystronic BySpeed 3015 Co<sub>2</sub> Laser
- ✓ Automatic loading/unloading with STOPA integration



**Max Sheet Size:** 4000mm x 2000mm | **Material Thickness:** Mild Steel 15mm | Stainless Steel 15mm | Aluminum 12mm



# PUNCH

---

Alpha's CNC punching facilities allow us to offer unbeatable productivity, reliability and flexibility as well as ultimate efficiency through automated "lights out" production, offering industry-leading punching standards. We can offer unparalleled process speeds for punching part number stamps, rib forming, special forms, countersinks and much more.

- ✓ Trumpf TruPunch S12 5000
- ✓ 2 x Trumpf TruPunch 5000 S10R
- ✓ Trumpf TruMatic 6000

**Max Sheet Size:** 3000mm x 1500mm | **Special Features:** Threaded taps | rib forming | special forms | countersinks

# FOLDING

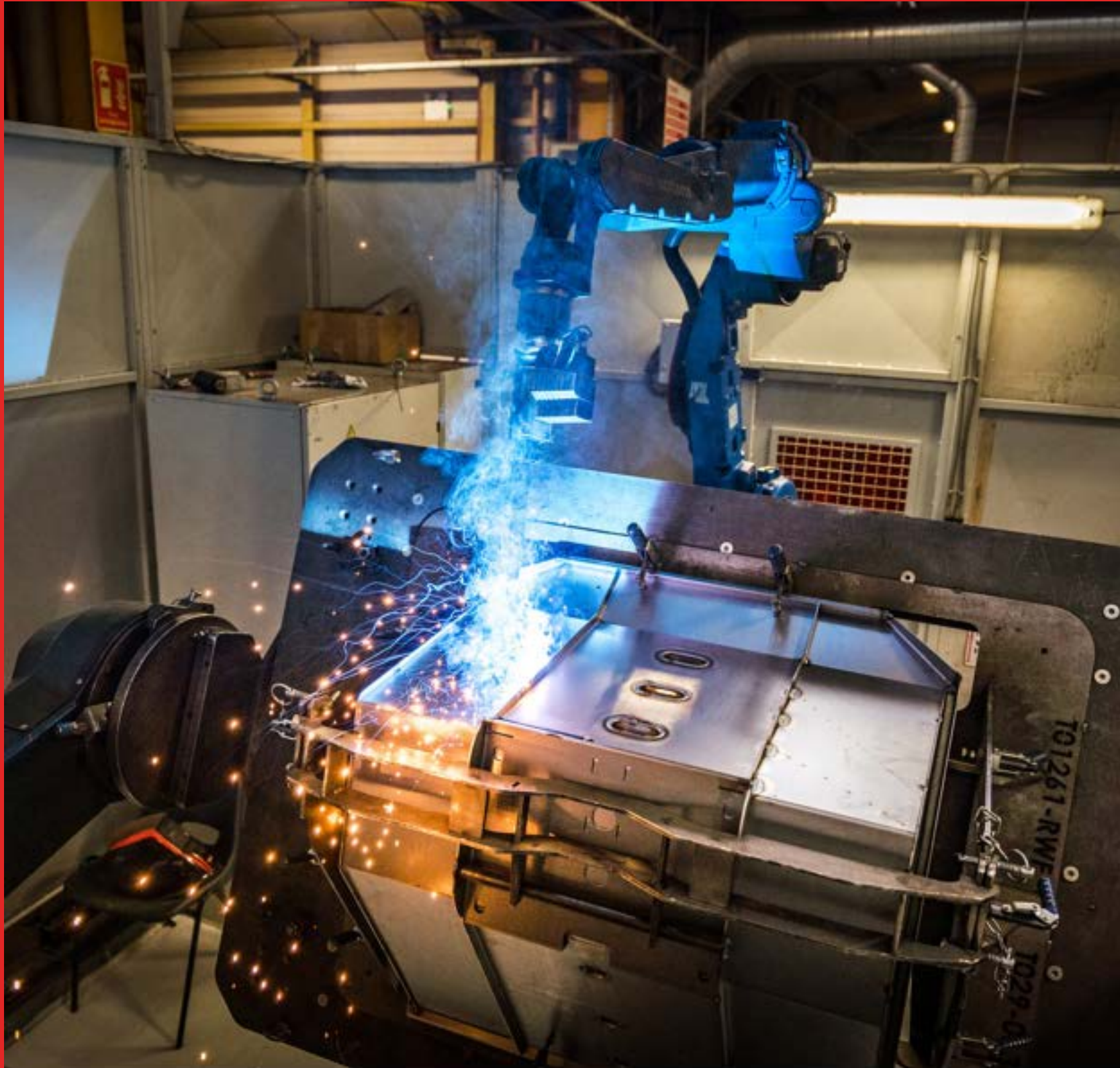
---

Our metal folding facilities use state-of-the-art machinery to provide a quick project turnaround. With robot folding, automated panel folding and standard manned press brake folding abilities, Alpha provides a broad portfolio of metal folding methods to suit a variety of project scopes.

- ✓ Salvagnini P4 Lean Panel Bender
- ✓ Trumpf TruBend Robotic BendCell with LoadMaster
- ✓ Amada Astro 100NT Robotic CNC fold
- ✓ 7 x Manual Press Brakes



**Max Sheet Size:** 4000mm x 2000mm | **Material Thickness:** Mild Steel 15mm | Stainless Steel 15mm | Aluminum 12mm



## WELD

---

Our highly trained and experienced weld team are some of the best in the industry and our quality is second to none. We produce high quality fabrications in various sizes and levels of complexity, for a range of applications and sectors. We work with businesses in a wide variety of sectors with capabilities to offer short and long runs of metal products.

- ✓ 14 x MIG & TIG Manual Weld Bays
- ✓ Robotic Weld Cell
- ✓ Spot, Projection and Stud Weld Facilities



# MACHINING CENTRE

Alpha Manufacturing is committed to providing a superior quality service using the latest technology in CNC machining. Investing in industry-leading technology allows for reduced project timelines and improved project accuracy through the use of high-performance, computer numerically controlled machinery.

- ✓ Mazak Nexus Twin Lathe
- ✓ Mazak Quick Turn Smart Single Lathe
- ✓ Mazak VTC 300CII
- ✓ Automatic Bar Feeder



**Special Features:** 3 Axis machining | Complex profiling | Automatic tool changer with 30 tools | In-house tooling manufacture

# ATLAS COATING

---

Our dedicated in-house powder coating plant, sister company Atlas Coating, ensures tight control on both efficiency and delivery and guarantees that quality remains our highest priority.

- ✔ We use OXSILAN®, a metal pre-treatment technology free from hazardous chemicals to provide superior corrosion resistance for a wide range of metal substrates.
- ✔ Salt Spray test approved for over 1,000 hours
- ✔ Quick colour change booths



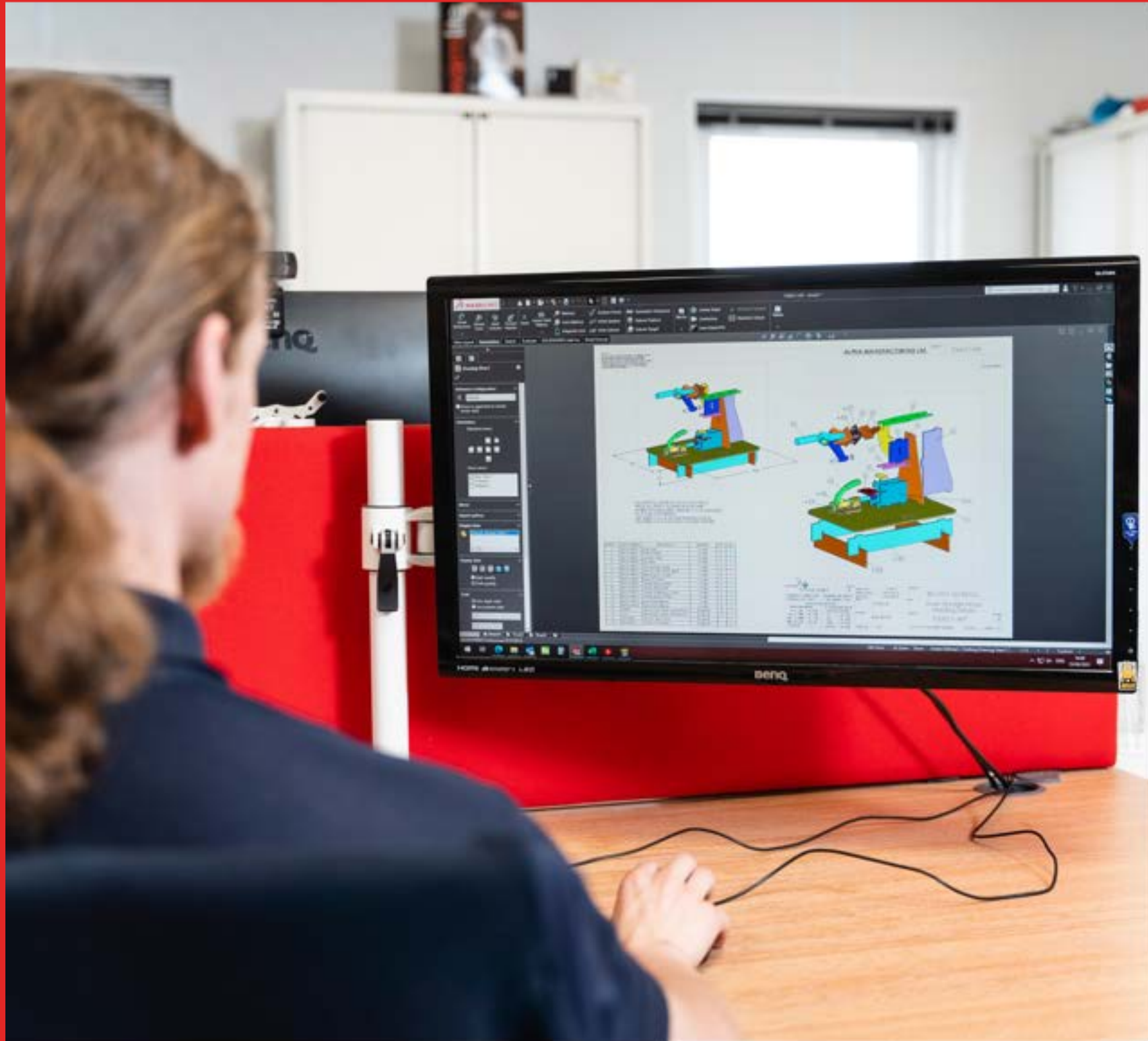
# QUALITY

---

The manufacture of quality products remains at the heart of the Alpha Manufacturing strategy. Since 1995 we have been awarded with ISO 9001 certification and we also added ISO 14001 in 2008.

- ✓ Fully documented, efficient, simple and easy-to-use Quality Management and Environmental Management System.
- ✓ Dimensional in-process inspection.
- ✓ High level of process capability to ensure conformance to specifications.





## XP PROTOTYPING

---

Our in-house, fully comprehensive service, "Alpha XP", utilises all of our state-of-the-art machinery. Our machining capabilities include Laser Cutting, CNC Folding, Punch, Turning, MIG and TIG Welding as well as Powder Coating to produce one-off metal prototypes in sheet metal, stainless steel or non-ferrous metal.

- ✓ Rapid prototyping process
- ✓ Utilising the latest SolidWorks 3D modelling
- ✓ Radan programming software

# ASSEMBLY & INTEGRATION

---

Alpha's dedicated in house assembly department have vast experience in assembling various components and products, working to technical drawings, SOP's and stringent quality standards.

- ✓ Riveting & Nut Inserting
- ✓ New Integrated Solutions facility dedicated to assembly





## DELIVERY & LOGISTICS

---

Alpha manage and run a fleet of vehicles to deliver the majority of our products throughout the UK.

- ✓ In-house vehicle fleet
- ✓ Nationwide delivery
- ✓ Network of sub-contract partners
- ✓ Parking and loading facilities



## PREVIOUS PROJECTS

Alpha have worked across a wide spectrum of sectors including automotive, agricultural, retail, electronics, utilities, medical and many more. This experience has enabled us to develop an understanding of the specific requirements of each sector we supply.



## **SANITISER UNITS**

Fabrication of metal parts, powder coating, assembly of product as well as graphics application from HEX Graphics.



## **SERVER CABINETS**

Custom fabrication, powder coating and assembly of a wide range of server cabinets for tech companies around the world.





## **MOTORISED WALK-BEHIND MINI-DUMPERS**

Fabrication and powder coating of all metal parts.



## **ELECTRICAL CABINETS**

Fabrication and powder coating in a variety of sizes and colours to suit customers requirements.

# THANK YOU

STAY IN TOUCH

[info@alphamanufacturing.co.uk](mailto:info@alphamanufacturing.co.uk)

[/Alpha Manufacturing](#)

[@alphamfg](#)



[/Alpha Manufacturing](#)

[@alpha\\_manufacturing](#)